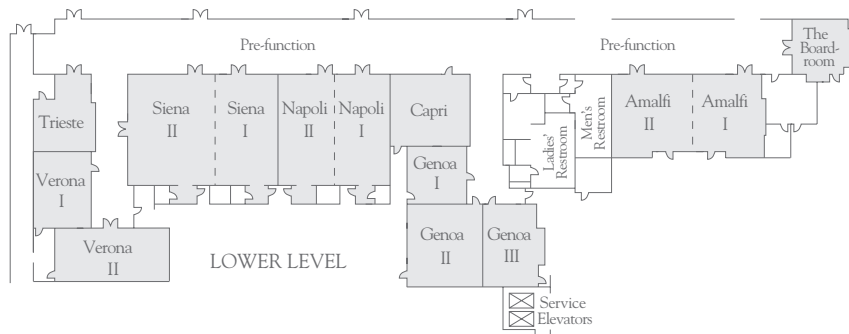
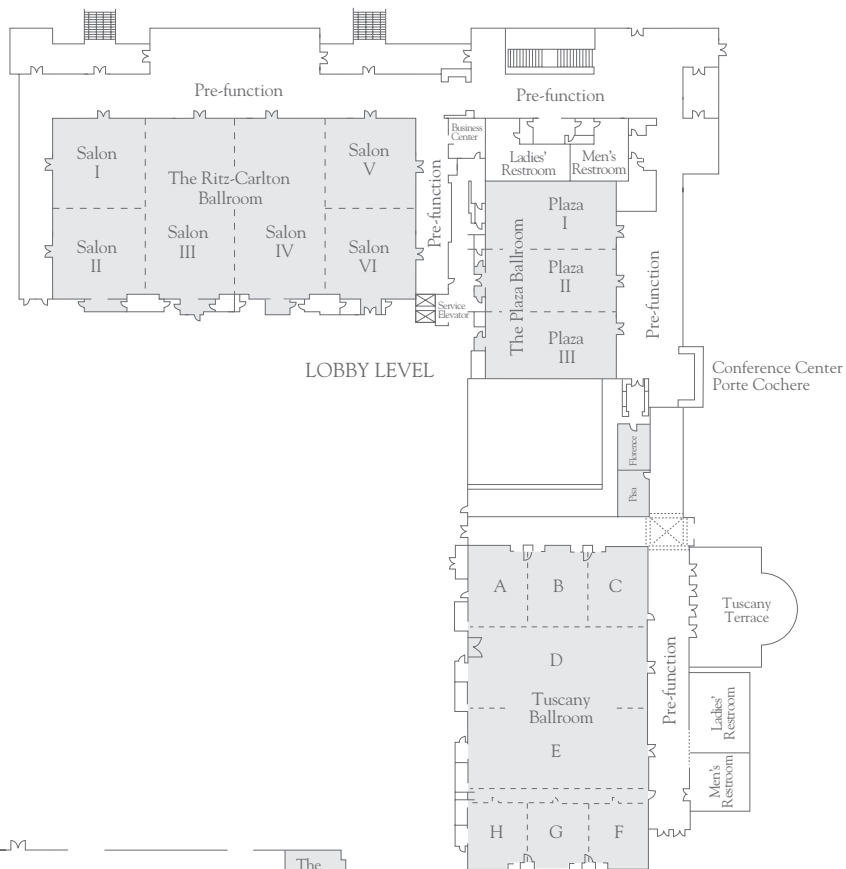




ROOM SIZES & CAPACITY	square feet	square meters	dimensions (ft)	dimensions (m)	ceiling ht (ft)	ceiling ht (m)	reception	rounds of 10	theater	conference	classroom	u-shaped	hollow square
LOBBY LEVEL													
The Ritz-Carlton Ballroom	15,696	1,458	181x89	55x27	16	5	1,650	1,120	1,750	–	1,000	183	–
Salon I, II, V, or VI	1,936	180	46x45	14x14	16	5	200	120	215	–	84	42	54
Salon III or IV	3,978	370	45x89	14x27	16	5	400	240	400	–	265	75	–
Pre-function	4,362	405	–	–	–	–	–	–	–	–	–	–	–
The Plaza Ballroom	6,055	560	65x92	20x28	11	4	635	410	600	–	350	93	–
Plaza I or III	2,005	185	65x31	20x9	11	4	210	110	180	–	120	48	60
Plaza II	2,045	190	65x31	20x9	11	4	215	110	180	–	120	48	60
Pre-function	2,333	217	–	–	–	–	–	–	–	–	–	–	–
Florence	360	33	15x24	5x7	–	–	25	20	30	12	12	–	–
Pisa	360	33	15x24	5x7	–	–	25	20	30	12	12	–	–
Tuscany Ballroom	13,485	1,253	87x155	27x47	21	6	1,400	1,000	1,500	–	900	–	–
Tuscany A, B, C	1,088	101	29x38	9x12	21	6	110	60	100	30	60	30	36
Tuscany D, E	3,480	357	87x40	27x12	21	6	350	200	350	–	230	–	–
Tuscany F, G, H	856	80	29x30	9x9	21	6	90	60	80	24	45	24	32
Pre-function	4,250	395	–	–	–	–	–	–	–	–	–	–	–
LOWER LEVEL													
Trieste	482	45	24x20	7x6	9	3	50	20	30	12	24	15	18
Verona I	619	57	22x29	7x9	9	3	65	30	50	20	24	20	24
Verona II	915	85	45x21	14x6	9	3	95	40	50	30	42	36	42
Siena I and II	2,625	244	61x43	19x13	9	3	275	160	250	48	140	48	60
Siena I	1,050	98	24x43	7x13	9	3	110	80	115	30	60	30	36
Siena II	1,575	146	37x43	11x13	9	3	165	120	140	30	84	33	42
Napoli I and II	1,846	172	43x43	13x13	9	3	190	120	200	36	84	48	60
Napoli I	923	86	22x43	7x13	9	3	95	50	80	30	42	32	30
Napoli II	923	86	22x43	7x13	9	3	95	50	80	30	42	32	30
Capri	856	80	31x27	9x8	9	3	90	50	80	24	45	27	32
Genoa I	479	44	21x23	6x7	9	3	50	20	40	18	24	18	24
Genoa II	995	92	31x32	9x10	9	3	100	50	80	24	50	27	36
Genoa III	718	67	21x32	6x10	9	3	80	40	70	20	30	24	30
Amalfi I and II	1,793	167	63x29	19x9	9	3	185	150	100	40	110	44	52
Amalfi I	856	80	30x29	9x9	9	3	90	80	50	20	52	24	30
Amalfi II	937	87	32x29	10x9	9	3	95	80	50	20	56	24	30
The Boardroom	468	43	23x20	7x6	9	3	–	–	–	12	–	–	–

FLOOR PLANS

MEETING SPACE & CAPACITY	square feet	square meters
OUTDOOR VENUES		
Tuscany Terrace	3,000	279
Da Vinci Lawn	20,000	1,858
Citrus Garden	2,700	251
Da Vinci Terrace	5,200	483
Fountain Courtyard	9,500	883
Fairways Lawn	20,000	1,858
Poolside	4,325	402
TOTAL OUTDOOR SPACE	64,725	6,014
HOSPITALITY SUITES		
Egret Hospitality Suite	1,000	93
Heron Hospitality Suite	1,000	93



The Ritz-Carlton Orlando, Grande Lakes
4012 Central Florida Parkway • Orlando • Florida 32837 USA
tel: 407-206-2400 fax: 407-206-2401 toll-free: 800-576-5760
www.ritzcarlton.com

